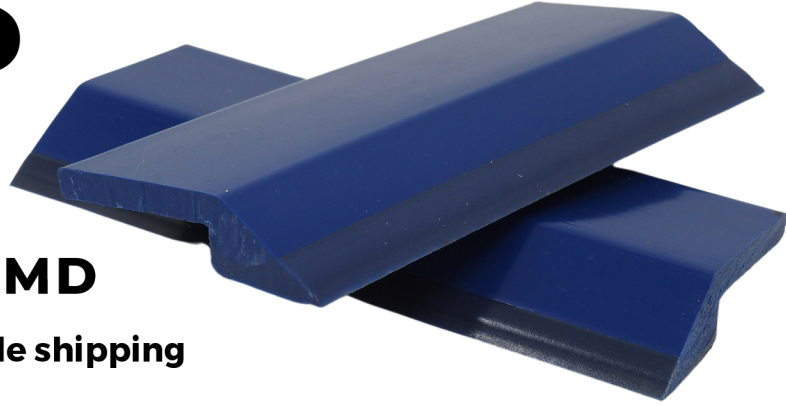


MAXI-TIP

PRODUCT DATA SHEET



Product code: **MTDD-MD**

Manufactured in 7.5' lengths for affordable shipping

BASE CONSTRUCTION

92A Durometer Shore A Rigid PVC

TIP CONSTRUCTION

75 Durometer Shore A Polyurethane

***We may be able to accommodate additional durometers upon request.**

WORKING TEMPERATURE

Ambient temperature 0-180 degrees Fahrenheit

FDA SUITABILITY

Meets FDA requirements for direct food contact under 1 or more of the following regulations:

- 21 CFR 177, 1680
- 21 CFR 177, 1520
- 21 CFR 177, 2600
- 21 CFR 177, 3297

COLOR

Dark Blue

Metal Detectable

***We may be able to accommodate additional colors upon request.**

The MTDD is a co-extrusion with a rigid 92A Base for mounting and a flexible tip all in one piece. The larger base allows for direct mounting to cross supports and frames as your application dictates.

