
Handheld Heat Press

Operations Manual

CMP-HHP50



Control Panel:



Button Functions:

T/t (Function): Press to adjust Time or temperature. Press again to alternate between Time and temperature. The flashing display is the one which can be adjusted.

Time (dwell time at the set temperature) is measured in minutes and seconds.

temperature is in degrees Celsius.

SET (Confirm): Press to confirm the set Time and temperature values. Time and temperature positions will cease flashing.

DOWN ARROW (Decrease): Press to decrease Time or temperature. Hold to decrease rapidly.

UP ARROW (Increase): Press to increase Time or temperature. Hold to increase rapidly.

CENTER BUTTON (On/Off): Press to start the heating process. Once the cycle is complete, the indicator will flash and the alarm will sound.

Power/Display:

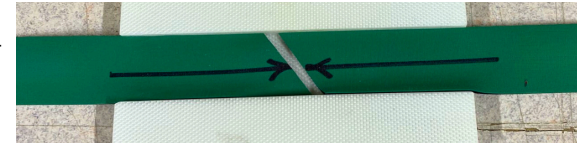
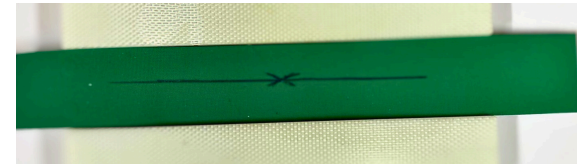
When the heat press is plugged in to a power source, the display shows the current settings. The cook cycle will not begin until the center button is pressed.



The temperature will decrease after the cycle is complete, so the belt can be left in the press with no negative impact to the weld. (cooling will be slower than removing the welded belt and using cooling thongs)

How to use:

- Prepare belt ends for the weld.
- Load the belt ends into the splice rail using release pads as appropriate.
- Align belt ends carefully for minimal joint gap
- Install top lid and clamp



- Place loaded guide rail in the heat press. The high heat resistant press pads increase pressure on the joint area.
- Press CENTER BUTTON to begin heating. Dwell time begins when the set temperature is achieved. (It may take approximately 5 minutes to reach the preset temperature point.) The pressure and heat force the melted material to flow together.
- When the dwell time is over, the indicator will flash and the alarm will sound. (The alarm will continue even though heating has stopped.)
- Press SET to stop the alarm. (The alarm will not stop until set is pressed.)
- For the most effective cooling, carefully remove the guide rail with the belt still installed and place in cooling tongs.
- Use extreme caution due to high temperatures!



Take extreme care not to disturb the joint area during cooling.

- Allow the belt to cool for 5-10 minutes in the cooling tongs.
- The belt is now securely welded and ready for service.